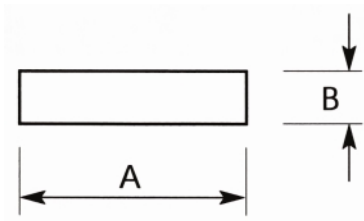
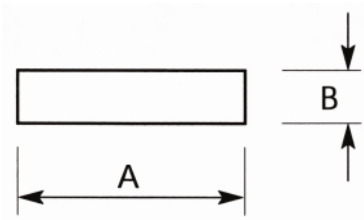


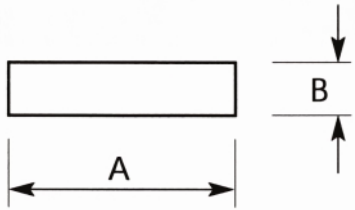
Section No	A	B	Corner Radius	Mass kg/m	Outside Perm
1231	9.53	3.18		0.082	25.42
33034	10	3		0.081	26
J791	12	3		0.097	30
9741	12	6		0.194	36
3896	12.23	3.94		0.132	32.5
35231	12.7	2.2		0.076	29.8
5019	12.7	3		0.103	31.4
7724	12.7	3.2		0.108	30.4
0320	12.7	4.75		0.163	34.9
0663	12.7	6.35		0.218	38.1
2096	12.7	9.53		0.328	44.5
5991	16	3		0.13	38
5740	19	4.5		0.231	47
0939	19.05	2.64		0.137	43.4
4984	19.05	3		0.155	44.1
0527	19.05	3.18		0.164	44.5
4994	19.05	6		0.31	50.1
5989	20	1.6		0.087	43.2
5992	20	3		0.162	46
J679*	20	4		0.217	48
4954	20	6		0.325	52
7710	20	8		0.432	56
J093	20	12		0.65	64
9336	25	1.6		0.108	53.2
5993	25	3		0.203	56
J918	25	4		0.271	58
5996	25	6		0.405	62
5112	25	8		0.54	66
32561	25	10		0.678	70
5999	25	12		0.81	74
J092	25	20		1.355	90
4985	25.4	3		0.207	56.8
4990	25.4	4.5		0.31	59.8
0340	25.4	4.75		0.326	60.3
0537	25.4	9.53		0.654	69.9
2852	28.58	3.18		0.247	63.5
K032	30	1.63		0.133	63.3
34559	30	3		0.244	66
4986	31.75	3		0.258	69.5
1082	31.75	3.18		0.274	69.9
0322	31.75	4.75		0.407	73
5179	31.75	6		0.516	75.5
4999	31.75	12		1.029	87.5



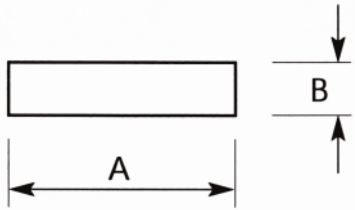
Section No	A	B	Corner Radius	Mass kg/m	Outside Perm
0634	31.75	12.7		1.089	88.9
9337	32	3		0.259	70
7288*	32	4		0.367	72
J345	32	6		0.52	76
J241	32	10		0.867	84
4996	38	6		0.616	88
5743	38	12		1.231	100
4987	38.1	3		0.31	82.2
0519	38.1	3.18		0.329	82.6
4992	38.1	4.5		0.463	85.2
0630	38.1	4.78		0.494	85.8
5729	38.1	6		0.617	88.2
5182	38.1	9		0.926	94.2
0507	38.1	9.53		0.98	95.3
1362	38.1	15.88		1.634	108
6852	38.1	19.05		1.96	114
30832	40	1.42		0.154	82.84
6077	40	3		0.324	86
6357	40	4		0.432	88
6706	40	6		0.648	92
X519	40	8		0.87	96
7426	40	10		1.08	100
K013	40	12		1.301	104
J425	40	16		1.734	112
9751	40	20		2.16	120
9776	40	25		2.7	129.7
0938	41.28	2.64		0.294	87.8
1864	44.45	3.18		0.384	95.3
33567	45	25		3.049	140
32576	45	32		3.902	154
35184	47	3		0.382	100
3852	47.62	1.63		0.217	98.6
K024*	47.65	1.42		0.184	98.1
5994	50	3		0.405	106
J919	50	4		0.542	108
E531	50	5		0.678	110
5997	50	6		0.81	112
7468	50	8		1.08	116
7425	50	10		1.35	120
6000	50	12		1.62	124
J003	50	20		2.71	140



Section No	A	B	Corner Radius	Mass kg/m	Outside Perm
4988	50.8	3		0.413	108
0506	50.8	4.75		0.651	111.1
0558	50.8	12.7		1.742	127
32198	50.8	15.88		2.186	133.36
35183	53	4		0.575	114
J403	60	3		0.488	126
8776	60	6		0.972	132
K650	60	10		1.626	140
9777	60	12		1.944	143.7
5741	63.5	4.5		0.772	136
0679	63.5	6.35		1.089	139.7
5000	63.5	12		2.057	151
1759	63.5	12.7		2.177	152.4
5780	63.5	25.4		4.355	177.8
J907	64	8.5		1.474	145
J904	64	16.6		2.879	161.2
J900	64	32.1		5.567	192.2
30835	66	6		1.073	144
35993	75	3		0.61	155.48
8590*	75	14		2.835	178
8589*	75	18		3.645	186
7556	75	40		8.129	229.14
34314	75	52		10.569	252.31
N720*	75	65		13.21	280
4989	76.2	3		0.619	157.97
N102	76.2	4		0.826	160.4
3970	76.2	4.75		0.977	161.9
5662	76.2	6		1.234	164.4
5183	76.2	9		1.961	171.5
0529	76.2	9.53		1.961	171.5
5001	76.2	12		2.469	176.4
0530	76.2	12.7		2.613	177.8
2333	76.2	19.05		3.919	190.5
5781	76.2	25.4		5.226	203.2
J723	80	1.6		0.347	163.2
6373	80	3		0.648	166
X993	80	4		0.87	168
7040	80	6		1.296	172
34955	80	8		1.734	175.14
8515	80	10		2.16	180
9742	80	12		2.592	184



Section No	A	B	Corner Radius	Mass kg/m	Outside Perm
J091	80	16		3.469	192
9862	80	20		4.32	200
J001	80	25		5.42	210
K033	90	2		0.488	184
E359	90	2.5		0.61	185
K034	90	3		0.732	186
X472	90	12		2.927	204
G566	95	6.3		1.622	202.6
G567	95	9.2		2.369	208.4
G568	95	12.1		3.115	214.2
G569	95	15		3.862	220
G570	95	19		4.892	228
31974	95	50		12.872	289.66
E795	100	1.5		0.406	203
J712	100	1.6		0.433	203.2
5995	100	3		0.81	206
7392	100	4		1.08	204
Z120	100	5		1.355	210
5998	100	6		1.62	212
8333*	100	10		2.7	220
6001	100	12		3.24	224
5021	100	25		6.775	250
Z716	100	33		8.94	266
N719*	100	40		10.84	280
N718*	100	50		13.55	300
30640	100	60		16.26	320
4998	101.6	9		2.469	221.2
1387	101.6	9.53		2.614	222.3
5002	101.6	12		3.292	227.2
0531	101.6	12.7		3.484	228.6
E300	108	8		2.341	232
31299	110	4.5		1.34	229
E319	110	5		1.491	230
30568	110	50		14.905	320
7015	114	10		3.078	248
33258	115	16		4.986	261.66
34909	120	40		13.008	320
E301	125	6		2.033	262
1278	127	4.75		1.629	263.5
2736	127	6.35		2.177	266.7
3301	127	12.7		4.355	279.4
30962	130	5		1.762	270
30080	135	6		2.195	282
Z448	150	1.8		0.732	303.6
K145*	150	3		1.22	306
31476	150	10		4.065	320
3620	152.4	12.7		5.245	330.2
5784	152.4	25.4		10.452	355.6



Section No	A	B	Corner Radius	Mass kg/m	Outside Perm
N917	160	4		1.734	328
8516	160	6		2.592	332
32706	160	8		3.469	336
9608	160	10		4.32	340
9432	160	12		5.184	344
32898	162	45		19.765	414
32900	162	50		21.951	424
30387	166	39		17.545	410
E320	200	10		5.42	420
E321	200	12		6.504	424
3325	203.2	12.7		6.968	431.8
34020	204	3		1.658	413.14
7524	220	6		3.562	450.28
3896*	12.32	3.94	0.38	0.132	32.51
7724	12.7	3.2	0.8	0.108	30.4
34052	13	5	50	0.176	35.14
2012	15	3.15	1.57	0.122	33
30282	15.8	5	0.7	0.213	40.4
33620	19.01	2.64	1.32	0.132	41.03
1617	19.05	3.18	1.57	0.158	41.7
0632	19.05	3.96	1.98	0.195	42.6
0864	19.05	4.78	2.36	0.233	43.5
X552	25	6	3	0.386	56.85
5113	25	10	1	0.675	70
3858	25.4	3.18	1.59	0.212	54.4
N734	25.4	6.35	3.18	0.414	58.05
4979	30	10	0.8	0.813	80
9367	31.75	6	2	0.505	72.07
9368	32	4	1.3	0.343	69.77
34913	36	6	3	0.564	78.85
8791*	38	12	1	1.229	98.28
30558	50	3	1.5	0.401	103.42
X551	50	6	3	0.792	106.85
X273	50	8	4	1.047	109.13
4978	50	25	1.6	3.388	150
7391	50.8	6.35	3.18	0.848	108.85
34508	69.85	38.1	0.5	7.212	215.04
X190	75	5	1	1.014	158.23
4982	75	25	1.6	5.08	200
7556*	75	40	0.5	8.129	229.14
34314	75	52	0.4	10.569	253.31
9754	80	6	3	1.275	166.8
4980	100	20	1.6	5.42	240
35870	110	10	0.8	2.98	238.63
35780	125	25	1	8.466	298.28
35379	150	10	1	4.063	318.28
2663	152.5	12.7	1.57	5.224	327.7
34020	204	3	0.5	1.658	413.14
7524	220	6	1	3.562	450.28